



## The perfect addition to digital working environments

### Idea Design 2.0

The origin of every good product is an idea. Today's CAD programs enable us to understand, to design and to optimize ideas. Yet complex ideas can be laborious to really understand in their full range. And for this cause we have developed the moreViz software – with the moreViz software complexity is reduced by providing the most natural perception to a digital design possible.

#### The moreViz Advantage:

- The window into the digital world of ideas and designs
- Easy Installation
- Works with many CAD applications

### Virtual reality allarounder

Transform any projection into a next-gen review center for your ideas. moreViz enables for direct visualization out of your application, in realtime and without the need for data conversion. Combining a tracking system of choice with 3D projectors or 3D displays creates the window to the digital world.

### Realtime datalink

The datalink between your software, e.g. JT2Go, Sketchup or Catia, works in realtime. moreViz copies all graphic data and sends it encrypted over the local network to the moreViz visualization clients. The clients mirror each change in the actual application in realtime. This way animations and steps can be played in the immersive environment - with the advantages of tracking and life-like stereo visualization.

### Open tracking system

Recognizing the user's position and viewing direction enables for natural interaction of the digital idea. This dataset is the basis for the window to the virtual world. Using the open VRPN interface moreViz can support many high-end as well as consumer level tracking systems. Supported systems include amongst others: ART, Intersense and Vicon professional trackers as well as Microsoft's Kinect. Additionally using a joypad or joystick for more intuitive input is always possible.



The professional virtual reality visualization software moreViz enhances your digital insight.

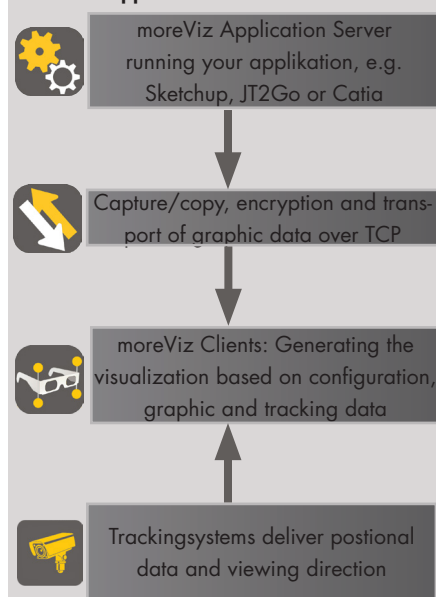
#### Areas of Application:

- Geospatial & Photogrammetry
- Medical Imaging
- Molecular Modeling
- Data Visualization
- Oil & Gas Exploration
- Mechanical Design
- Simulation & Training

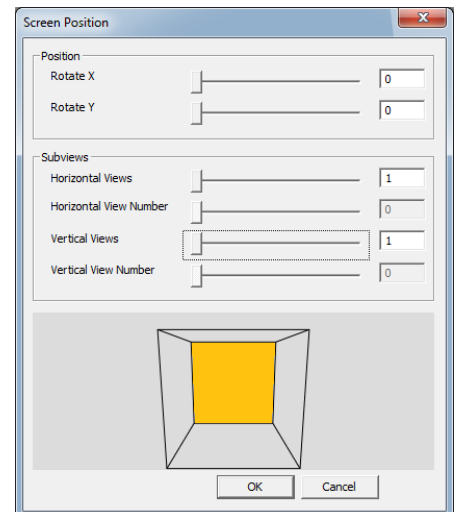
### More than "just" Cave

moreViz supports any count of visualization clients, whilst it does not matter if they run on the same or different hardware systems. Using the local network clients can run on any Windows computer.

#### moreViz Application Workflow



Clients can be easily set up with the integrated configuration tool for wall rotation (to the the client that it is e.g. responsible for the right hand wall in a cave). moreViz also delivers the option for subviews, splitting e.g. the front walls into four parts. This way a 4K front wall can easily and cost-effectively consist of four projectors. Your need defines the visualization: monoscopic or stereoscopic, with tracking or in stand-ard powerwall mode.



Client configuration allows for rotation and subviews

### moreViz optimized your workflow

Ease of use, flexibility and the added value to your digital work will easily convince you of the moreViz software. Get in touch with us now to schedule a presentation in your working environment.



With the moreViz software you can connect caves and furthermore powerwalls, desktops and basically any Windows based device on your local network

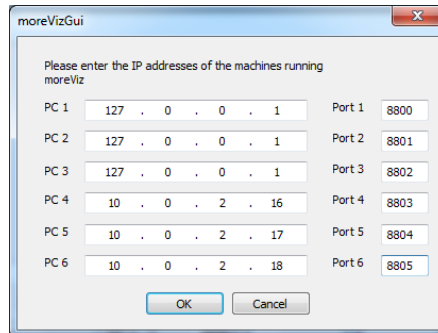
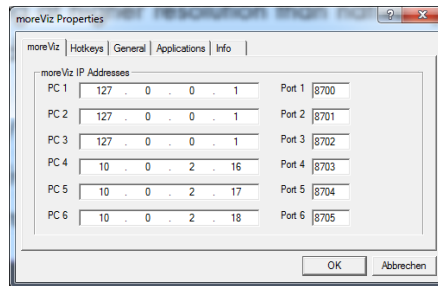
**Collaboration and team reviews**

With its modular structure moreViz can work in many different setup combinations. For instance, the tracking and graphic data being displayed in a cave can simultaneously be displayed on a single projector or desktop. Using the local area network sharing the data over a site is easier than ever. With moreViz your digital working environment becomes more flexible than ever.

**Professional Service**

more3D is working for longer than 10 years with specialisation in VR and 3D Stereo. With a network of professionals for IT and 3D Hardware, we will always find the best solution for your VR environment. Our patented softwares moreStereo3D and moreViz optimize workflows by providing easy to use and flexible VR visualization solutions to create tangible visions.

Get in touch with us today to find out about your sustaining benefit and opportunities in VR.



moreViz'es tracking and graphic Channel config

**moreViz App Server requirements**

**Minimum**

- Single Core CPU 3,0Ghz
- 1GB RAM
- Graphics Card with OpenGL 2.1 Support
- 100Mbit LAN
- Installed Applications for cave conversion
- Windows 7 x64

**Recommended**

- Quad Core 3,0 Ghz
- 8GB DDR3-1333 RAM
- Current Gen Nvidia or AMD Graphics
- Gigabit LAN
- Installed Applications for cave conversion
- Windows 7 x64
- Installed & connected tracking system

**moreViz Client requirements**

**Minimum**

- DualCore 3,0 Ghz
- 4GB RAM
- Graphics Card with OpenGL 2.1 Support
- 100Mbit LAN
- Windows 7

**Recommended**

- Quad Core 3,0 Ghz
- Current Gen Nvidia or AMD Graphics with Quad Buffer Support for Stereo3D
- Gigabit LAN
- Windows 7 x64

**VRPN Translator requirements**

- Single Core 3,0 Ghz
- 1GB RAM
- 100Mbit LAN
- Windows 7

**moreStereo3D / moreViz feature comparison**

	moreStereo3D	moreViz
Stereo 3D	✓	✓
Stereo 3D up to 3 screens	✓	✓
Stereo 3D up to any number of screens	✗	✓
Stereo 3D inside the actual Application	✓	✗
Resolution Upscaling	✓	✓
Rendering at higher resolution than native app	✗	✓
Clustered Rendering support	✗	✓
Tracking Support	✗	✓
Flystick / Wand Support	✗	✓
Perspective Adjustment for Wall rotation	✗	✓
Collaboration over Network	✗	✓
Portable Licenses	✓	✓
Professional Support & Service	✓	✓